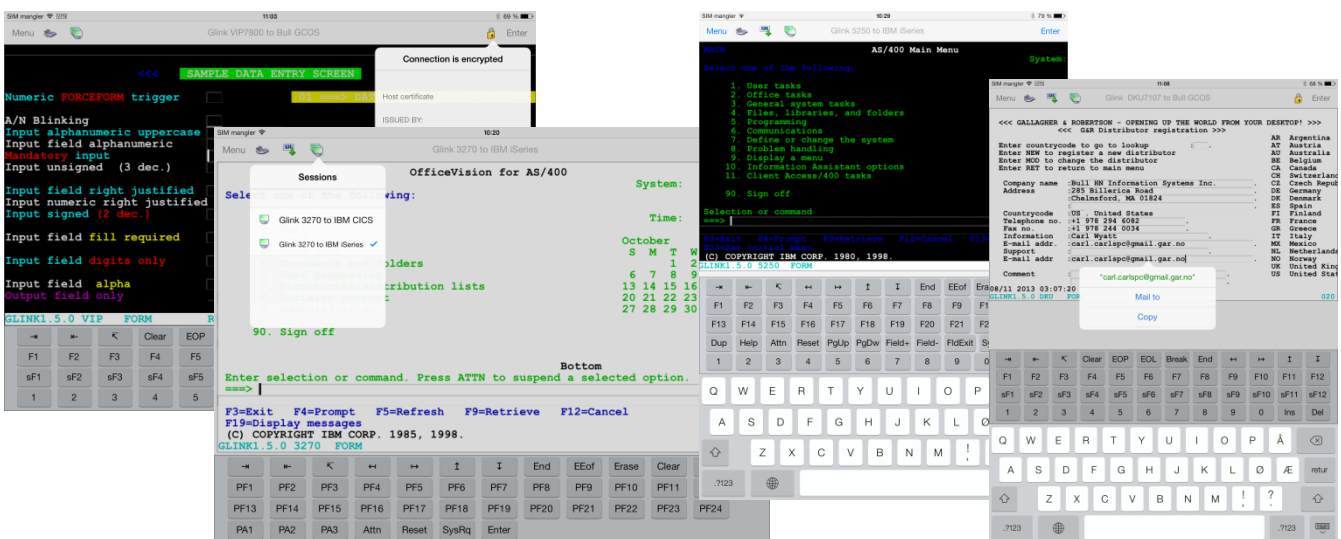


Multisession Terminal Emulation for iPad, iPhone & iPod!

Glink for iOS is a port of our immensely successful and popular Glink for Windows product that has been chosen by more than 600,000 people worldwide for connection to legacy host systems from Windows platforms. Now Glink is also available for iPad, iPhone and iPod touch, allowing you to access your Bull, IBM, DEC, UNIX and Linux hosts from anywhere without having to bring a laptop computer or MacBook!

Glink meets the needs of all major environments, including retail, government, finance, industry, travel and commerce.

- Glink acts as a fast, efficient and highly functional terminal emulator for connecting Apple's iPad, iPhone and iPod touch devices to legacy business applications running on enterprise systems
- Glink allows you to have multiple concurrent host sessions running at the same time. They can be any mix of terminal and print sessions, to the same or different hosts and applications



What is Glink for iOS?

Glink for iOS is an App for terminal emulation and communication with legacy host systems. It includes terminal emulations for the Bull, IBM, Open Systems and Public Information environments and uses standard TCP/IP protocols for communications with the legacy systems, and can secure all protocols with the use of Secure Socket Layer (SSL/TLS) encryption and the VT emulation with the use of SSH. For Bull legacy systems, Glink offers the extremely efficient G&R/Ggate protocol in addition to TNVIP and Telnet.

A configurable multiline toolbar where you put frequently used operations, recorded as macros, and function keys makes Glink a very powerful tool.

In Glink for iOS we:

- have ported decades of experience, and proven emulation and communication code, from Glink for Windows to iOS
- provide you with reliable terminal emulation software that you install and administrate on the device using techniques that are standard for Apple's handheld devices
- open a browser view or e-mail client if you tap-and-hold a finger on a http:// or https:// URL or e-mail address
- support multiple host sessions running concurrently with in-app switching between the sessions
- support Linea Pro and Infinea Tab barcode scanners and magnetic card readers
- support the built-in camera as a barcode scanner
- support Bluetooth keyboards and barcode scanners

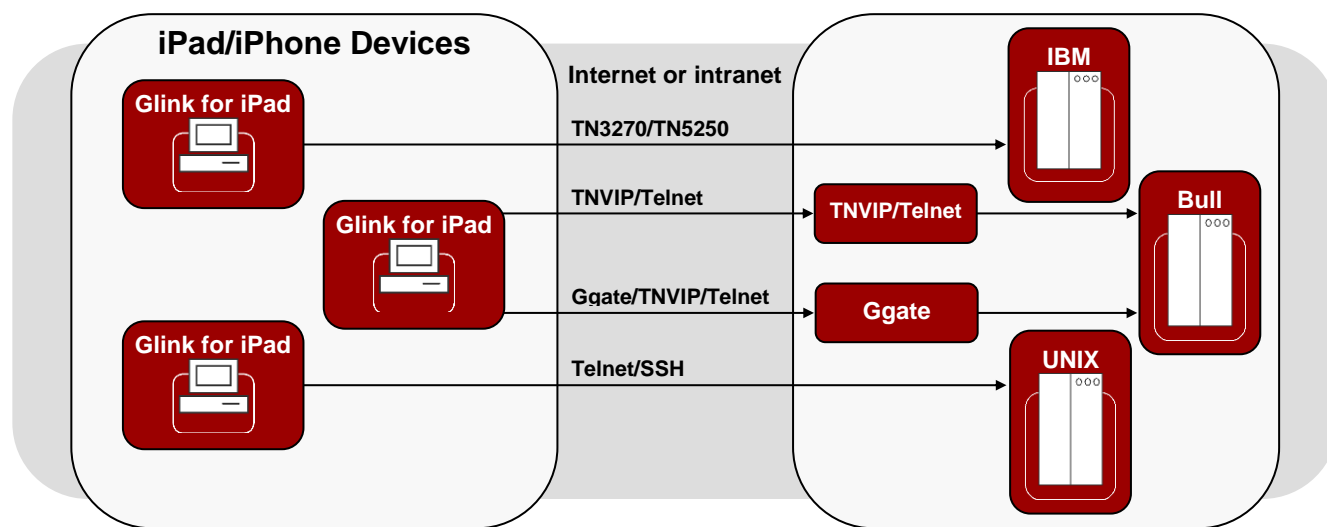
Look-and-Feel:

- Glink is compliant with Apple's design guidelines for the iPad/iPhone/iPod devices. Zooming, scrolling, selection, focus, enabling/disabling of keyboard are implemented the same way as in Apple's Safari browser.
- A configurable multiline toolbar can be customized to meet your needs. Add your own macros for frequently used operations, change button texts, move buttons around and remove unused function keys.
- Glink's macro feature saves you from a lot of typing and is a very useful tool for automating logon or frequently used operations involving multiple interaction steps with the host. The macros are easily assigned to buttons on the toolbar with your selected text.

Installation and configuration: Glink for iPad/iPhone is a client App, downloaded from the App Store and installed and configured on each user's device.

Security: Glink for iOS supports SSL/TLS for encryption of all host communication. The VT emulation supports SSH. Both direct communication with the SSH Daemon and tunneling of the Telnet protocol is supported. Username/password or private keys can be used for authentication. Configurations and connection macros can be protected by a password.

Print: Glink supports both print screen and printing from the host in all emulations. Either in separate 3270, 5250 or DKU/VIP print sessions or in the terminal session from Unix/Linux hosts and from Bull hosts when the Ggate- or TNVIP- server merges the print into the terminal session.



Emulations:

IBM 5250, IBM 3270, VT100/VT220/VT320/VT340/VT420, ANSi, Bull VIP7800, Bull VIP7700/7760, Bull DKU7107/7211, Bull DKU7102; all screen sizes

Communications:

TCP/IP: TN5250, TN3270, Telnet, SSH, G&R Ggate, TNVIP and Raw TCP/IP

Security:

Secure Socket Layer (SSL/TLS) and SSH for encrypted host communication. Display host certificate from top menu.

Toolbar and Macros:

A configurable multiline-toolbar allows you to assign recorded multi-step macros to buttons with your own text. Rearrange, rename and delete function-keys as you want.

Scroll-back buffer:

Configurable scroll-back buffer contains the history of your host session. Copy, print or e-mail scroll-back buffer content.

Colors:

Sixteen foreground and eight background adjustable colors

Print/e-mail:

Print or e-mail host print, terminal emulation content or scroll-back buffer content

Keyboard and barcode scanners:

On screen standard keyboard and external Bluetooth keyboards supports international characters. Linea Pro, Infinea Tab, built-in camera and Bluetooth scanners supported for barcode scanning

Double Byte Character Sets (DBCS):

The IBM 5250 emulation supports Chinese (Simplified and Traditional), Japanese and Korean

Font style:

Choice between Plain, Bold, Italic and Bold & Italic

On-screen e-mail address and http:// and https:// URLs:

Tap and hold to open e-mail or browser with address.

Host sessions and configurations:

Supports multiple concurrent sessions and configurations

Requirement:

iOS 10 or later. Supports iOS12, iPad, iPad Pro/Mini, iPhone X/XR/XS/XS Max, iPhone 8/8 Plus and iPod touch



Griini Næringspark 3
NO-1361 Østerås, Norway
Tel: +47 23 35 78 00. E-mail: info@gar.no
www.gar.no

